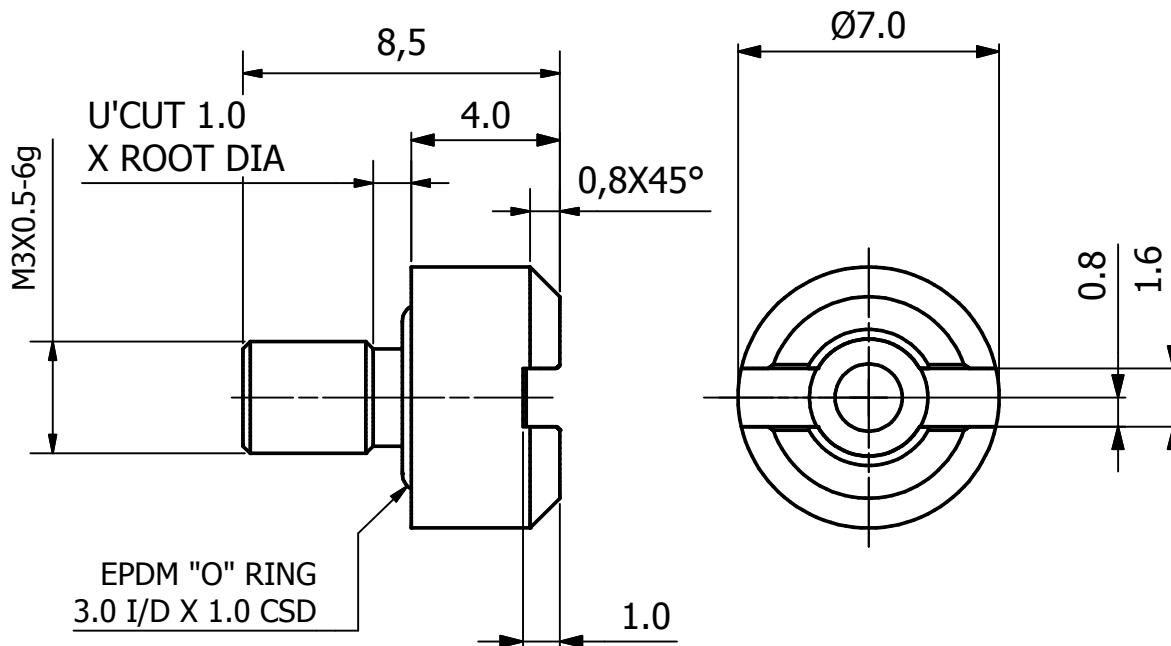


DRG No
BL/D 9290 INST

REMOVE ALL SHARP EDGES
UNLESS SPECIFIED

DO NOT SCALE - ASK

USED ON



NOTES:

1. PERFORMANCE SPECIFICATION:

NOMINAL FLOW RATE: 30cc/min AT 1" Wg.
85cc/min AT 6" Wg.

OPERATING TEMPERATURE RANGE: -40°C TO +75°C.



STORAGE TEMPERATURE RANGE: -50°C TO +85°C.

HUMIDITY: 0 TO 100%.

IMMERSION: DEPTH 1 METRE FOR A DURATION OF 2 HOURS.

2. MEMBRANE MATERIAL: MODIFIED ACRYLIC COPOLYMER CAST ON A NONWOVEN POLYESTER SUPPORT. POST TREATED FOR HYDROPHOBICITY THROUGH UV/E BEAM POLYMERIZATION.

THIS DESIGN IS THE PROPERTY OF BROWNELL LTD, AND MAY NOT BE COPIED OR REPRODUCED WITHOUT THEIR PRIOR WRITTEN PERMISSION

MATERIAL STAINLESS STEEL TO BS970 PT 1 303S31	PROTECTIVE FINISH NATURAL (CLEAN FINISH)	EXTERNAL CHAMFER ADJUSTED TO 0.8mm	6314	5	10/07/09
		OUTER AND INNER CHAMFER CHANGED TO 0.1mmX45°	6309	4	22/05/09
		BREATHER HEAD REVISED - SLOT DEEPER & CHAM. ADDED	6057	3	20/08/03
		PERFORMANCE SPEC CHANGED	6002	2	18/11/02
EST. WT. -	THIRD ANGLE PROJECTION	CHANGE	MOD No	ISSUE	DATE
DIMS IN mm	SURFACE TEXTURE	TOLERANCES : UNLESS OTHERWISE STATED	+/- 0.1		
SCALE 5:1	-				
 RED DOT = ORIGINAL  BLACK DOT = COPY	BROWNELL LTD		DRAWN	CHECKED	
	LONDON NW10 7XF		JB		
TITLE MINI BREATHER			DRAWING No. BL/D 9290 INST		