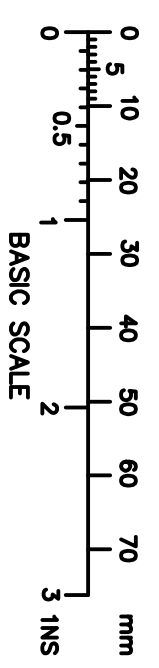


THIS DRAWING IS THE PROPERTY OF BROWNELL LTD, AND MAY NOT BE COPIED OR REPRODUCED WITHOUT THEIR PRIOR WRITTEN PERMISSION

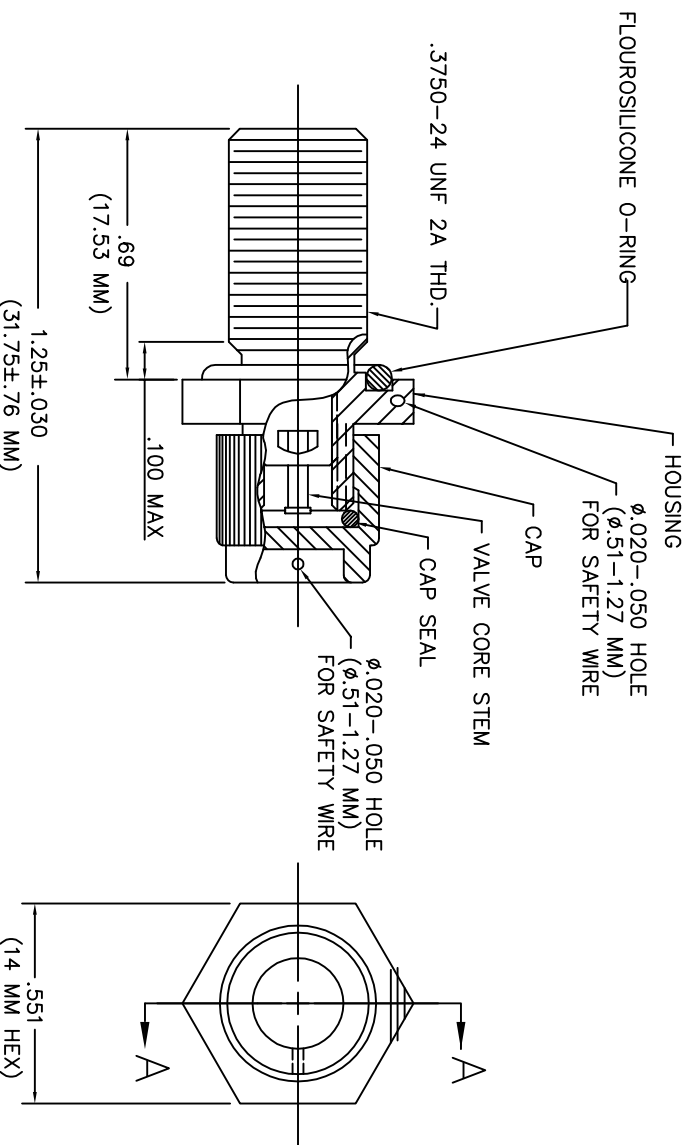
DRG No
BL/D10962 INST
USED ON _____

THIRD ANGLE PROJECTION
REMOVE ALL SHARP EDGES UNLESS SPECIFIED
DO NOT SCALE - ASK



NOTES:

1. FILLER VALVE HAS AN INNER TUBE VALVE CORE AND REQUIRES AN ACTUATOR IN THE CONNECTOR.
2. PRESSURE MAY BE RELEASED BY DEPRESSING THE VALVE CORE STEM.
3. INSTALLATION TORQUE: 8-10 INCH-POUNDS.
4. MATERIALS AND FINISHES:
- 4.1 CAP AND HOUSING: ALUMINUM ALLOY.
- 4.2 FINISH: ALUMINUM ALLOYS ALOCROM
- 4.3 CAP SEAL: FLOURSILICONE
5. IDENTIFICATION: INDIVIDUALLY BAG AND LABEL AS FOLLOWS:
FILLER VALVE BL/D10962
6. MAX. LEAK RATE: 0.002 cc/min/bar
7. MAX. WORKING PRESSURE: 5 bar



MATERIAL	PROTECTIVE FINISH
SEE NOTE 4	SEE NOTE 4
EST. WT.	

TOLERANCES ±0.02 UNLESS OTHERWISE STATED	TITLE
SURFACE TEXTURE	BROWNELL Ltd. LONDON NW10 7XF
DIMENSIONS IN in/mm	VALVE FILLER
SCALE (ORIGINAL)	

RED DOT=ORIGINAL BLACK DOT=COPY	DRAWING NUMBER	BL/D10962 INST
PK		

CHANGE	MOD No	ISSUE	DATE
ADD NOTES ORIGINAL	6451	2	01-06-11
		1	05-10-10