

THIS DRAWING IS THE PROPERTY OF BROWNELL LTD. AND MAY NOT BE COPIED OR REPRODUCED WITHOUT THEIR PRIOR WRITTEN PERMISSION

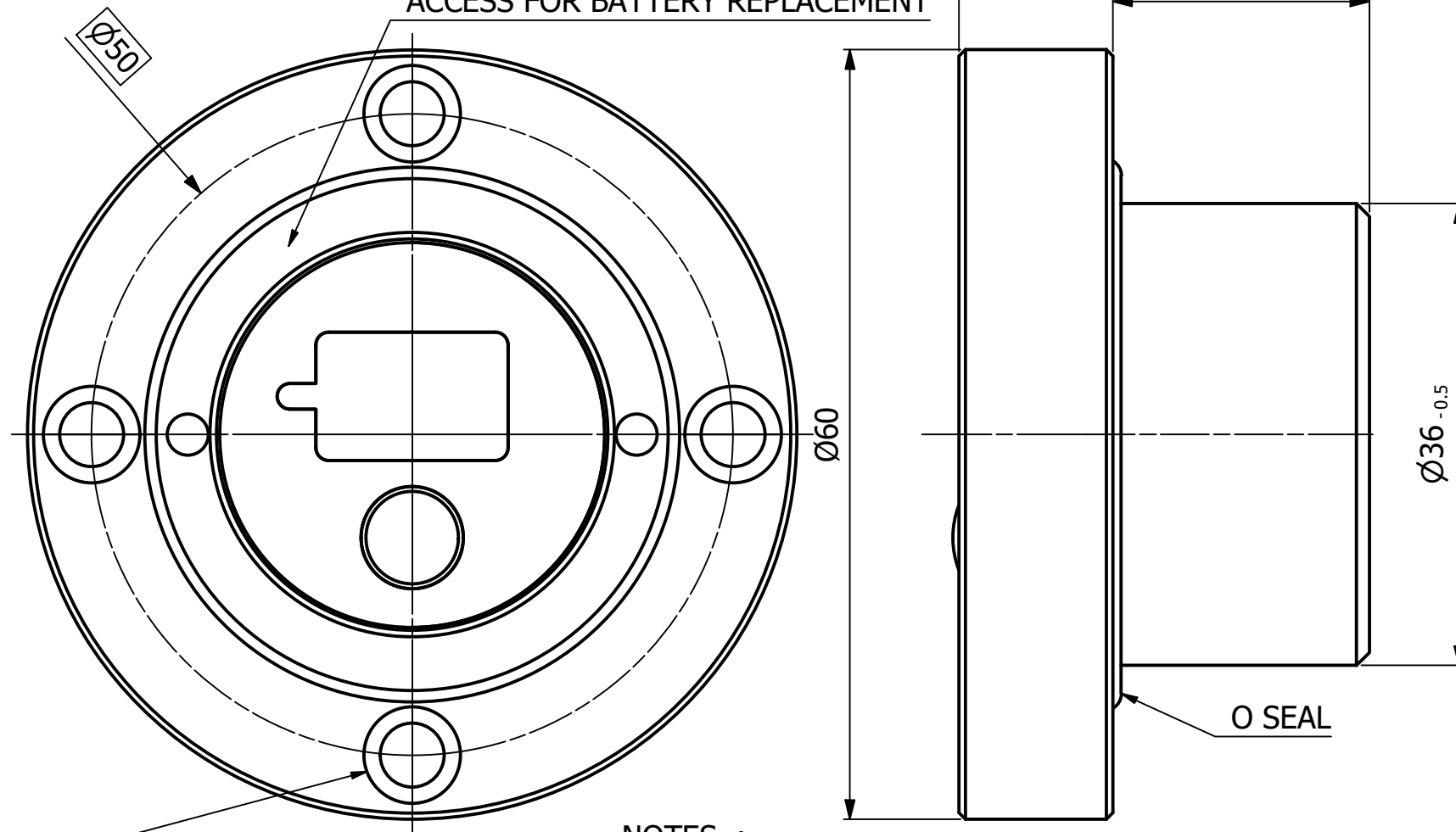
DRG No
BL/D10375 INST
USED ON -----

REMOVE ALL SHARP EDGES UNLESS SPECIFIED

THIRD ANGLE PROJECTION

DO NOT SCALE - ASK

REMOVABLE CENTRAL CORE
(L.H. THREAD) TO PROVIDE
ACCESS FOR BATTERY REPLACEMENT



4 HOLES TO SUIT
M4 SOCKET HEAD CAP SCREWS
EQUISPACED

NOTES :-
INGRESS PROTECTION : IP67
OPERATING TEMPERATURE : -20°C to +60°C
STORAGE TEMPERATURE : -40°C to +80°C
MAX. OPERATING PRESSURE : 90 psi

POWER SOURCE : FLAT LITHIUM (COIN CELL) BATTERY

NOMINAL VOLTAGE : 3 VOLTS
NOMINAL CAPACITY : 200 mAh
ESTIMATED LIFE : 5 YEARS (BATTERY)

AVAILABLE OPTIONS : RFI

DISPLAY SEQUENCE for one press of the button

- 1) RELATIVE HUMIDITY - 2 TO 90% RH
- 2) TEMPERATURE - -30°C TO +60°C
- 3) DEWPOINT - -50°C TO +20°C

PERFORMANCE SPEC	7091	3	11-04-19
PERFORMANCE SPEC	6318	2	22-07-09
ORIGINAL		1	03-06-08
CHANGE	MOD No	ISSUE	DATE

MATERIAL ALUMINIUM ALLOY	PROTECTIVE FINISH ANODSIED & DYED BLACK	TOLERANCES UNLESS OTHERWISE STATED ±0.5	BROWNELL Ltd. LONDON NW10 7XF		RED DOT=ORIGINAL BLACK DOT=COPY	DRAWN SKS	CHECKED NP
EST. WT. -----		SURFACE ROUGHNESS 3.2µm (N8)	TITLE ENVIROMENTAL INDICATOR - FLANGED				
		DIMENSIONS IN in/mm	mm				
		SCALE (ORIGINAL)	2:1				